



Vertical Carousels





Welcome to Linpic

Linpic Vertical Carousels are a well established solution for compressing storage space, speeding up product retrieval and improving stock management. Manufactured in the UK since 1983, Linpic carousels have been successfully installed in a wide range of industries, both in the UK and overseas.

Speed of Response

Linpic is committed to providing a quick response to all aspects of your carousel enquiry, from initial survey to completion of the project.

Return on investment

The wide range of Linpic benefits can add up to a swift return on your initial investment. Many Linpic customers have realized a payback within 6–18 months. Our team will assist you by preparing a detailed cost justification analysis as part of the decision making process.

Successful Application

Working in partnership with our clients, Linpic provides support and advice at all stages in determining the best logistical and most cost effective solution. The external and internal dimensions, as well as the carrier configuration can be adapted to suit your specific requirements.

Software Solutions

The control systems on Linpic carousels are dedicated to helping you to gain the highest efficiency from your stores operation. The Linpic carousel's computer based system with integrated software is designed to allow you to progress easily from a single machine to the largest of networked systems.

Shelf No. 4 ? R-Ctrl

| Shelf No. | Bin No. | Depth |
|-----------|---------|-------|
| 4 | 5 | 2 |

Part 33470164251 PG code 100
Lot No. NONE Stock Qty 1
ring

Pick Qty
0

Continue

Meeting Customer Requirements

Standard Features

- Lockable doors
- Password control
- Pick by light
- Manual Up/Down buttons
- Data backup
- Colour Graphics
- TFT Display

Special Features

- Customised counter tops
- Fire protection
- Anti static
- Weigh count scales
- Bar code readers
- Ticket Printers

Security Upgrades

- Smart card access
- Automatic closing doors
- Lockable carriers
- CCTV security

Multi Aperture Options

The flexibility of the Linpic's design allows for the installation of additional apertures in almost any desired position. This creates the opportunity for interaction between separate working areas via floor-to-floor and/or front-to-rear combinations.

Clean Rooms/Cold Stores

Atmospherically sealed and climate controlled Linpics, capable of functioning at temperatures as low as -30°C, are also available for the storage of sensitive items.



Increased Picking Speeds

The Linpic principle is to bring the stock as speedily as possible to the operator. Specialised software will sort your picking list into the optimum picking sequence, thereby minimizing machine travel time and increasing picking speeds.

Stock Accessibility

Selection of stock can be made using any of the following criteria...

- Location
- Part number
- Pick List
- Batch
- Kit list
- Assembly
- Data transfer

Stock Accuracy

All transactions are recorded and the information captured, resulting in improved stock accuracy.

Floor Space Saving

A Linpic allows the customer to make maximum use of the height available on site. This can result in floor space savings of up to 80% when compared to conventional shelving systems.

Health & Safety

Stock is replenished and withdrawn at the optimum height for the convenience of the operator. The physical effort and hazards of bending and stretching associated with static storage systems is considerably reduced.

Stock Security & Cleanliness

Each Linpic is a self contained, lockable unit and many customers have benefited from substantial reductions in stock losses resulting from this feature of the carousel. The structure of the Linpic also results in stock being presented in a much cleaner condition than from conventional open shelving.



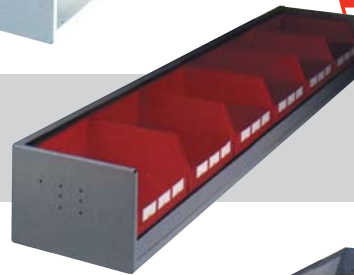
The Linpic universal carrier offers flexibility and a range of sizes to suit most needs. With options of front lip extensions, slot-in dividers and drop-in shelves, each carrier can be configured to your exact specification. Examples of the most popular selections are shown below.

Carrier Design

➤ Universal Carrier (Plain)



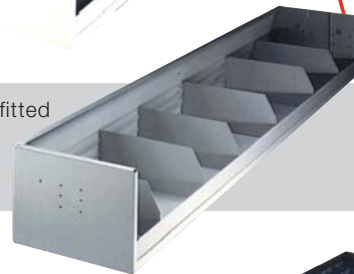
➤ Universal Carrier fitted with containers



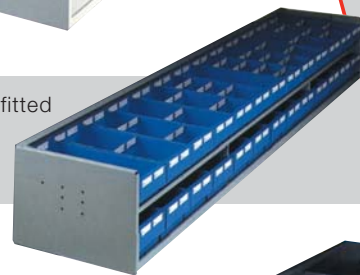
➤ Universal Carrier fitted with tool holder blocks



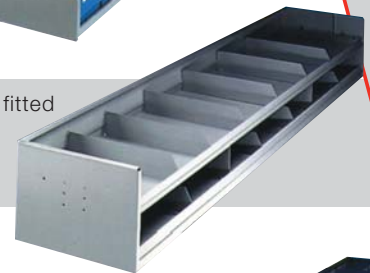
➤ Universal carrier fitted with full height adjustable left to right dividers



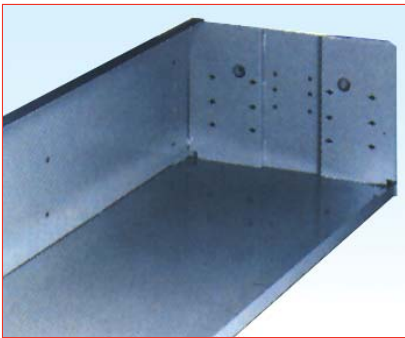
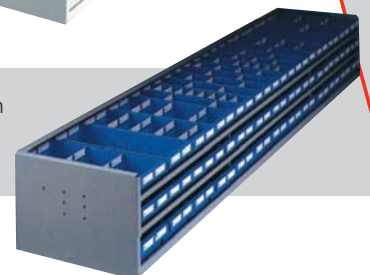
➤ Universal carrier fitted with removable intermediate shelf with sub-divisible compartment trays



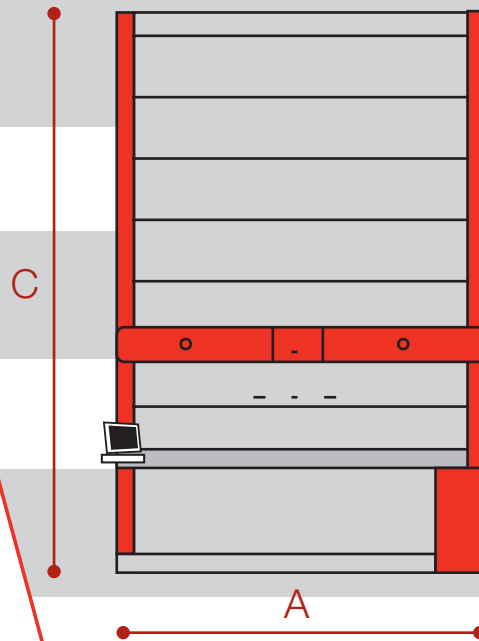
➤ Universal carrier fitted with removable intermediate shelf with adjustable left to right dividers



➤ 3-tier carrier with sub-divisible compartment trays



Linpic Technical



Carrier Depth & Loadings

| Linpic Model | Carrier Depth mm | | | Max Load Per Carrier |
|--------------|------------------|-----|-----|----------------------|
| | 400 | 500 | 620 | |
| 3000 | ✓ | | | 180Kg |
| 6000 | ✓ | ✓ | ✓ | 250Kg |
| 9000 | ✓ | ✓ | ✓ | 400Kg |
| 14000 | ✓ | ✓ | ✓ | 600Kg |

Standard carrier widths are 2510mm and 2910mm but custom carriers can be manufactured by request.

| Linpic Model | Machine Dimensions mm | | |
|--------------|-----------------------|----------------|-----------|
| | A | B | C |
| 3000 | 3150 | 1250 | 2345/7550 |
| 6000 | 3150/3550 | 1250/1570/1900 | 2345/7550 |
| 9000 | 3150/3550 | 1250/1570/1900 | 2345/7550 |
| 14000 | 3150/3550 | 1250/1570/1900 | 2345/7550 |

