

Direct Carousel Services

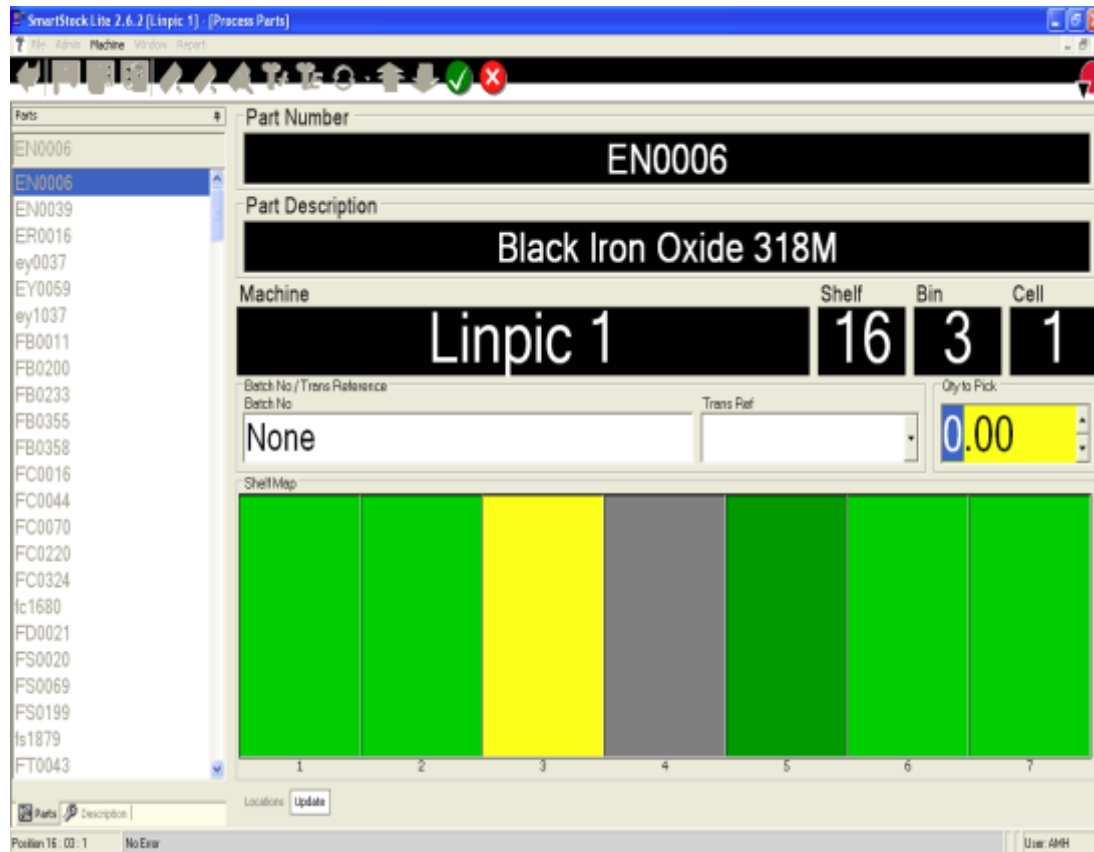
Software

SmartPik & PikLink

Contents

SmartPik Range	3
Industrial.....	3
Office.....	3
SmartPik SP	4
SmartPik SP.....	4
SmartStock Lite	5
SmartStock	6
Location Assistant	7
Optional Modules	8
Web Module	8
List Module.....	8
Email notification Module.....	8
PikLink	9
PikLink AX	10
SmartPik TL	11
PikLink LP	12
Host System Links	12
PikLink FP	13
Hardware	14

SmartPik Range



The SmartPik Range of software is our standalone software suite. These packages are capable of providing all the functionality you will need to control the contents of your carousel system.

This suite is split into two parts. The first is industrial parts storage and the second is office filing systems.

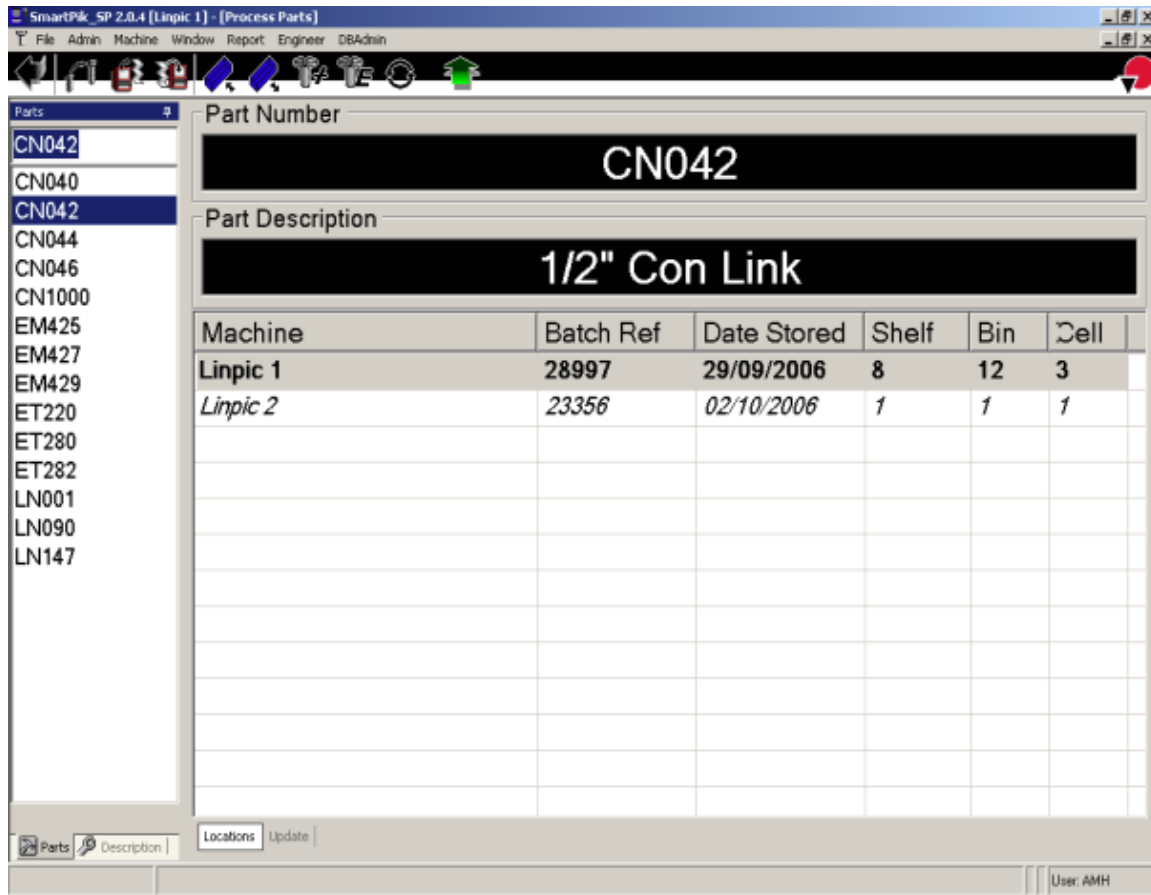
Industrial

The range of industrial packages include simple part location, cross referencing and full stock control.

Office

The range of office packages have the option of simple document retrieval through to detailed online document viewing.

SmartPik SP



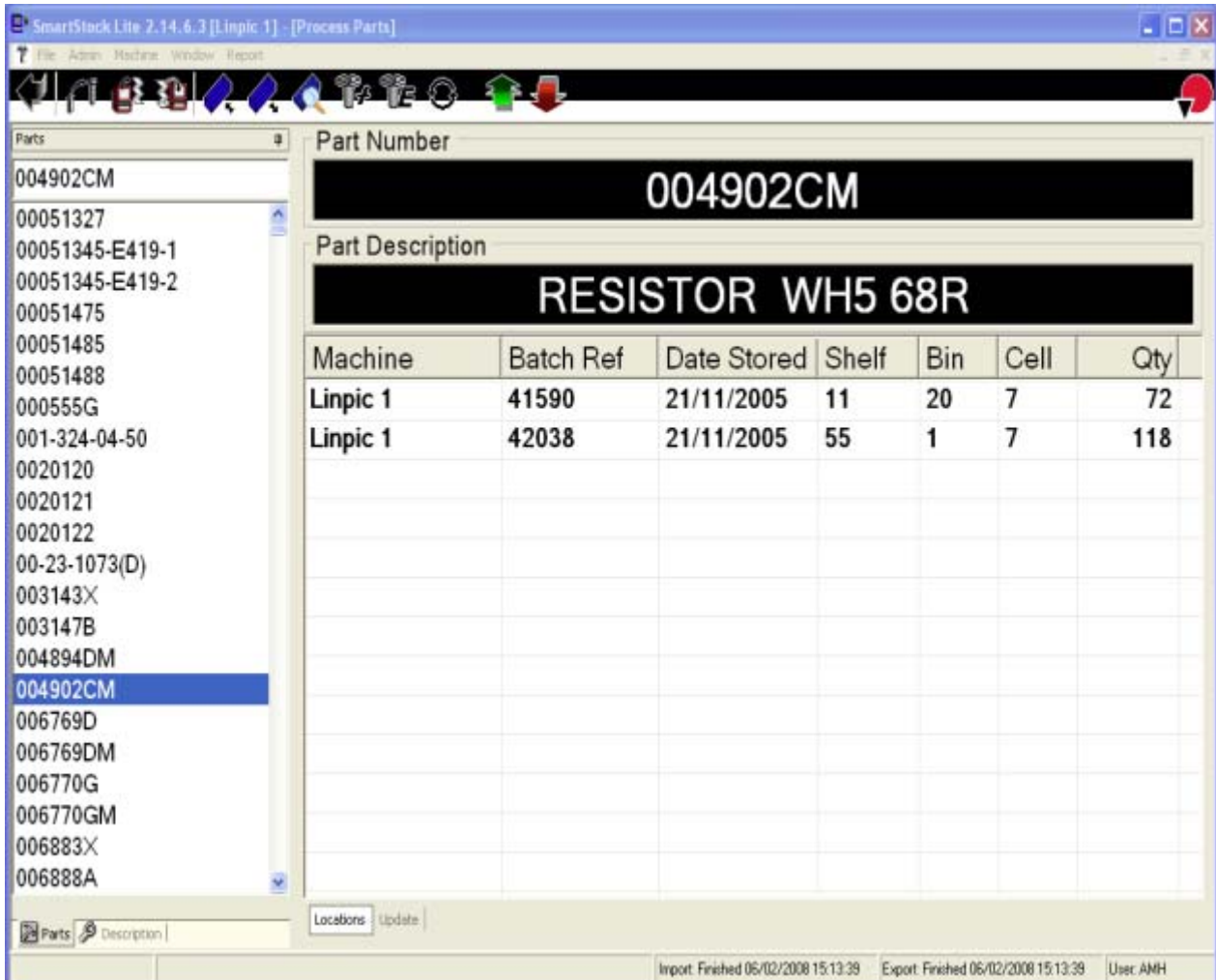
SmartPik SP

SmartPik SP is our entry level part control Package.

It keeps track of the stock locations within the carousel.

- Stock can be retrieved by part code or by Description
- No location quantity information is stored in this level
- Create and work from kitting lists so there is no need to enter stock manually.
- Create and work from order lists for one off orders.
- Lists are sorted into the fastest route so parts are picked as fast as possible and machine moves are reduced extending the life time of the motor.
- Multiple carousel can be controlled through one pc or individual pc's.
- Static racking facility to store information about parts stored outside of the carousel system.
- Security through individual user passwords or link into windows password system.
- Bar code facility to pick and restock parts by bar codes
- Content Reports by part and location order for easy traceability.

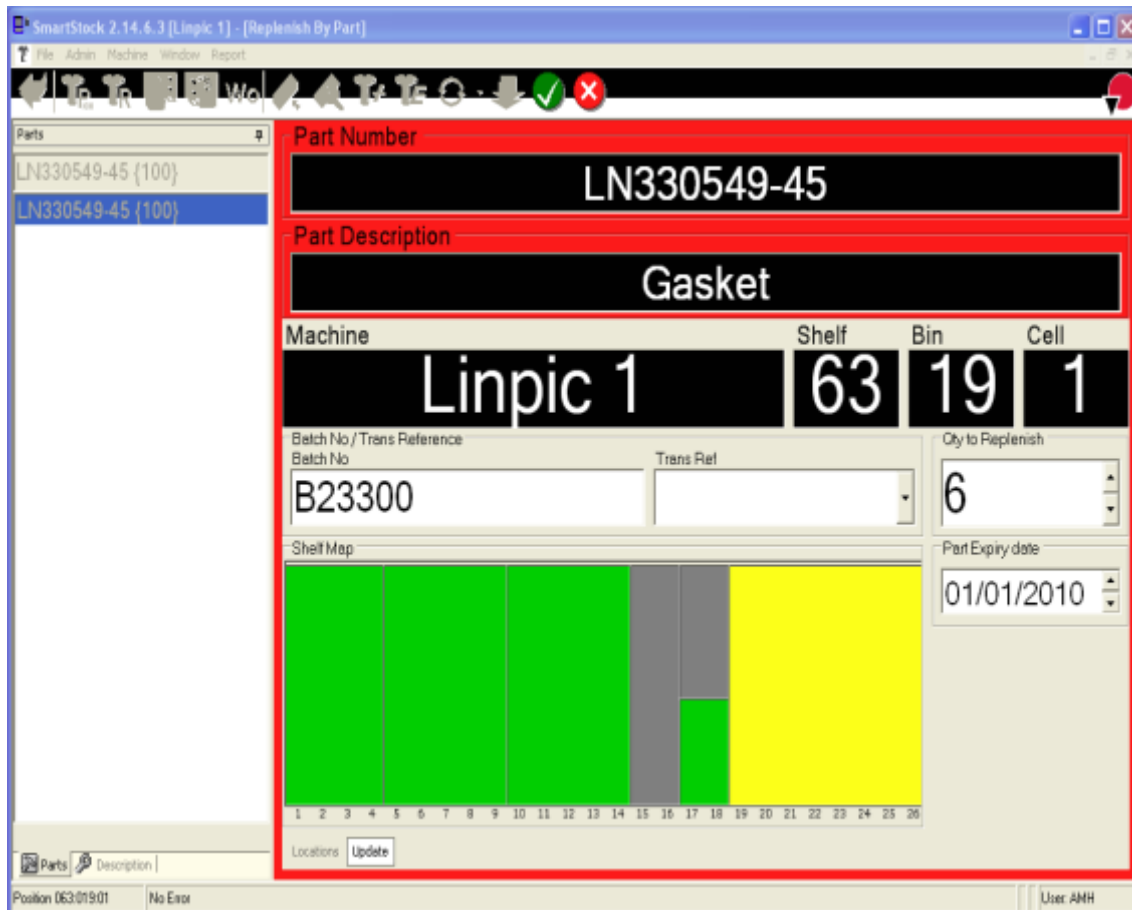
SmartStock Lite



SmartStock Lite is based on SmartPik SP with the added facility of quantity control. This system warns the user when items are running low by order picking and kitting lists with the location of the stock.

- Individual pick
- and restock lists
- User access restrictions
- Low stock reports with the option of only listing items that have gone below the low stock level. From the last time the report was run or listing all low stock items.
- Stock movement report so it is possible to track who picked and restocked what and when.
- Product grouping facility to group related items for easier report tailoring i.e. group stock by the person responsible for reordering so low stock reports can be tailored to show only the items the user is responsible for ordering.

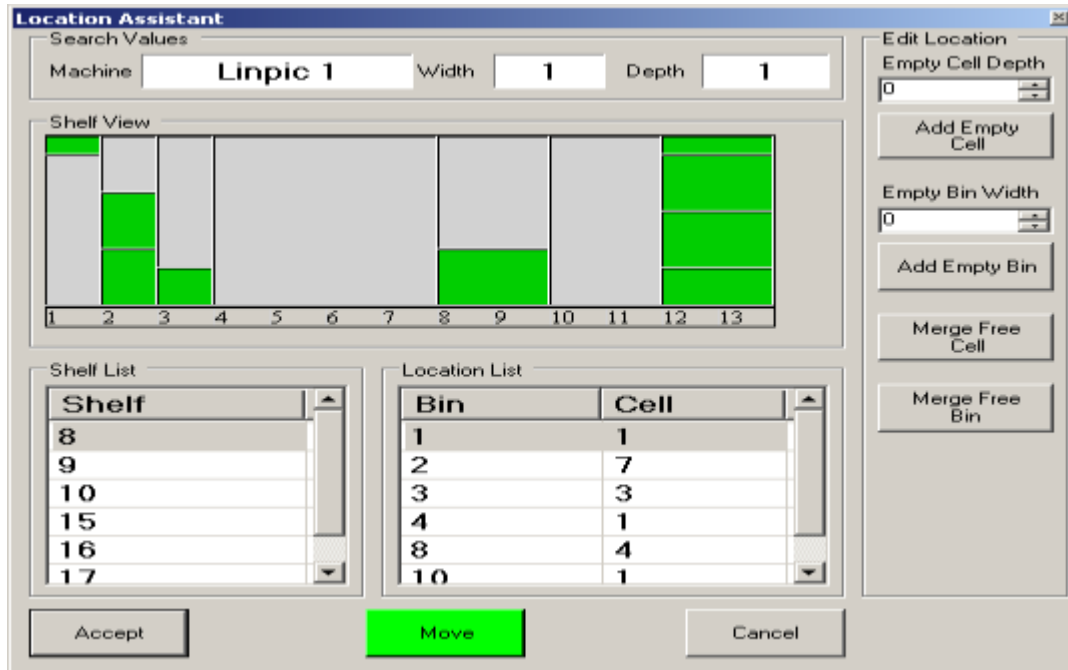
SmartStock



SmartStock is based on SmartStock Lite and brings the functionality up to a full stock control

- Batch stock is stored against a batch reference. It is then possible to specify which batch to use when creating picking
- lists.
- Expiry date record when a batch will expire to insure the oldest stock is picked first and blocking the picking of stock past its use by date.
- Transaction Referencing facility to group a set of picks and replenishments against a reference e.g. Job number so it is possible to track parts used against a job.
- Extended stock details including reorder quantity, maximum stock level and individual unit cost.
- Transaction report listing all movements against a transaction reference.
- Transaction Cost report lists all transactions between a set of dates or transaction reference numbers and the cost of the materials used against that transaction.

Location Assistant



The location assistant module is optional with SmartPik SP, SmartStock lite and SmartStock

This will allow the carousel user to quickly locate the correctly sized empty locations for any new stock to be replenished into the systems. This assistant provides existing users with a 40% saving in time taken to initially load the Carousels. Furthermore, time saved to find the right sized empty location once the machine is in operation should be at approximately 90% against conventional methods.

Location Assistant, which uses the friendly graphical screen interface, allows the operator to enter the required shelf type for the item, together with the storage "footprint" (in terms of width and depth) that the item will occupy on the shelf. At the press of a key, the system then finds a list of suitable locations within the Carousel for the item to be stored allowing the operator to pick the best location for the parts.

Optional Modules

Web Module

The web module allows users to remote access the Smart system. Facility's include

- Stock and list enquiries
- Create and maintain stock information
- Create and maintain kitting, picking and restock lists
- Modify system configurations
- Run Reports

List Module

If you have an existing MRP or stock management system but can not use any of the PikLink Range due to limited information on the system. It is still possible to send pick and restock lists to the SmartPik software suite.

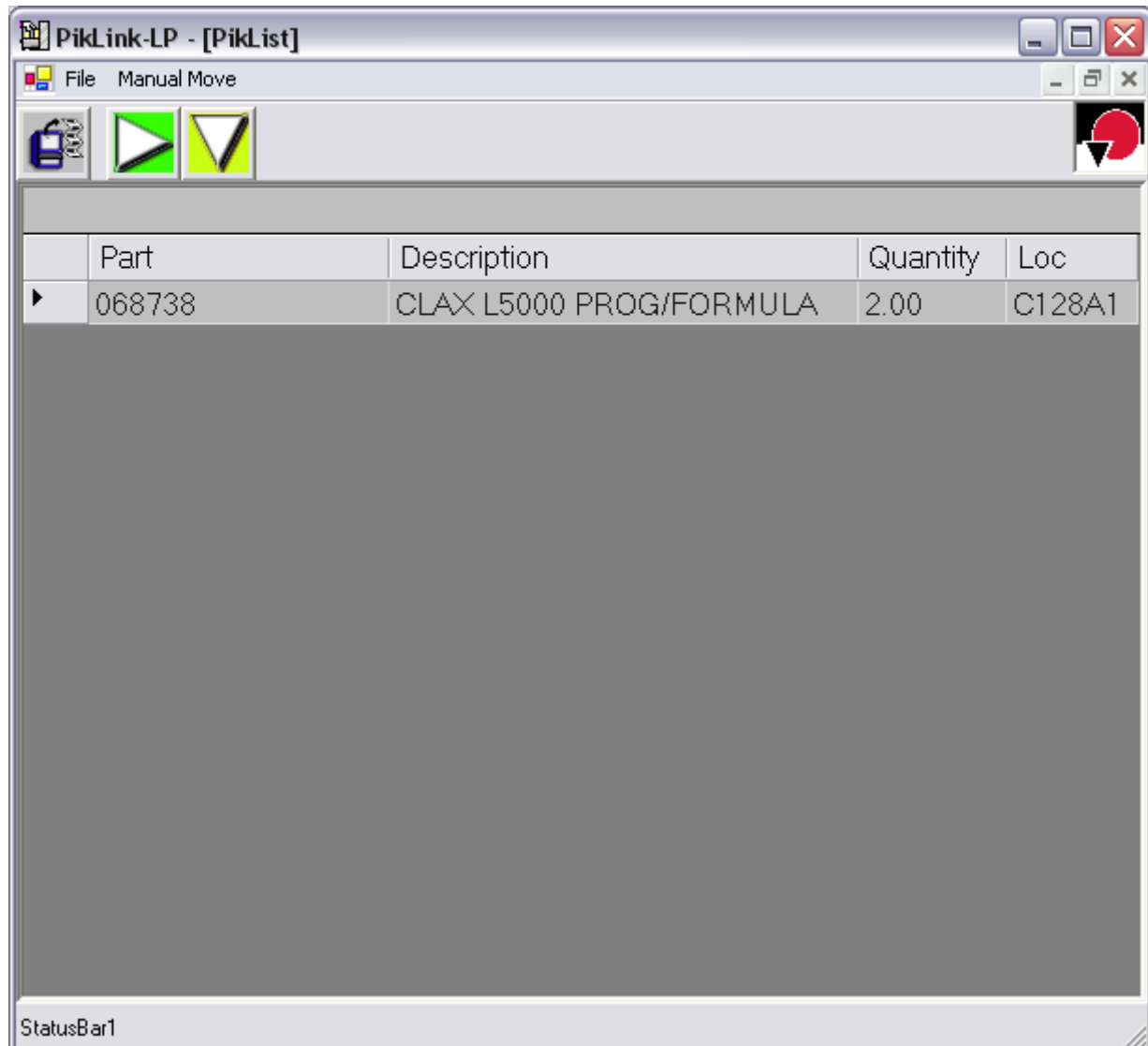
- Automated pick and restock list creation
- Automated stock detail synchronisation
- Automated return data to updated host system

Email notification Module

It is possible to add the facility to send email notifications to key users at critical moments.

- Low stock email, instant or daily email notifications when stock reaches low levels.
- Investigation emails, notify users who have documents out for investigation to remind them to return the documents if they are kept out the carousel over a specific time limit.

PikLink



The PikLink range of software is used to link customers existing stock control systems into the carousel. The carousels are then controlled directly from information in the existing stock management systems.

The idea of the PikLink range is to remove the need for duplication of data and eliminate the need for maintaining two databases. This removes any problems that may arise when trying to keep two systems in sync.

These products range from programming tools, to allow programmers to modify their own system and control carousels directly. All the way to list processing systems which process information received from a customers host system.

PikLink AX

PikLink - AX is a tool to enable programmers to control the carousel unit without any need for understanding of the requirements of the carousel.

The Programmer only needs to know the location they wish the carousel to go to. PikLink AX will then take charge of moving the machine and handling any mechanical faults that arise. E.g. A box blocking the light beam.

PikLink - AX is a .net dll with COM or Active x protocols included for backwards compatibility.

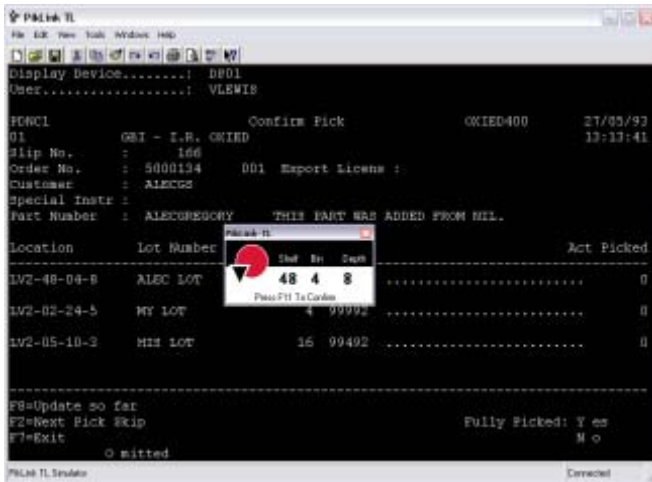
PikLink - AX comes in two parts:

Part 1 is a windows dll, which sits in the background and controls the carousel. If you want to design your own screens you can use this to just control the carousels.

Part 2 talks to Part 1 to tell it the locations to go to. It also displays the user screen, which tells the operator what is happening. This screen also displays any error messages that come from the carousel.

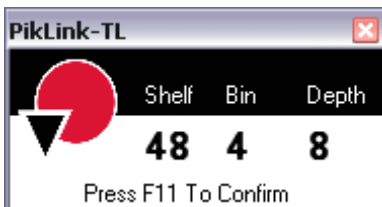
It is possible to control multiple carousels from one computer using PikLink - AX. However Health and Safety issues require that the pc terminal be in line of sight of the opening of any carousel it can operate.

SmartPik TL



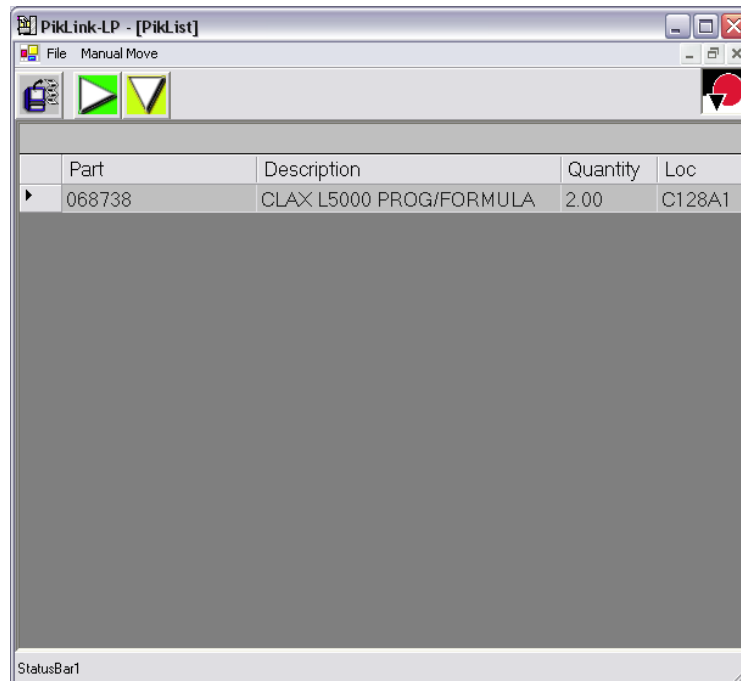
PikLink TL (Terminal Link) is our software to link into client terminal emulation software.

If you are using a windows based terminal emulation package to link into your text based stock control package, then PikLink TL allows you to continue to use your own package on the carousel. When the user wishes to move the carousel to the location displayed by your software, they press a special key combination, which moves the carousel.



The client terminal emulation software must have a macro scripting language, which enables the inclusion of Active X objects or OLE Automation objects. The software works through a script in the Terminal Software. This script reads the location of the part being processed from the screen and feeds it to the PikLink TL software. Which deciphers it into a Shelf Bin Depth location and moves the machine to that location.

PikLink LP



PikLink-LP is a batch list processing system designed from the ground up to be extremely configurable.

The basic concepts are these. The system:-

- Split large lists into individual lists based on key fields e.g. Order number.
- Hold no information only that sent from the host system.
- In its clear presentation it allows the operator to pick the use up very quickly.
- Must be adaptable to different customer requirements and changing customer requirements.
- Must be able to control all carousels.
- Everyday controls are keyboard and mouse operated.

Host System Links

Examples of links to host systems

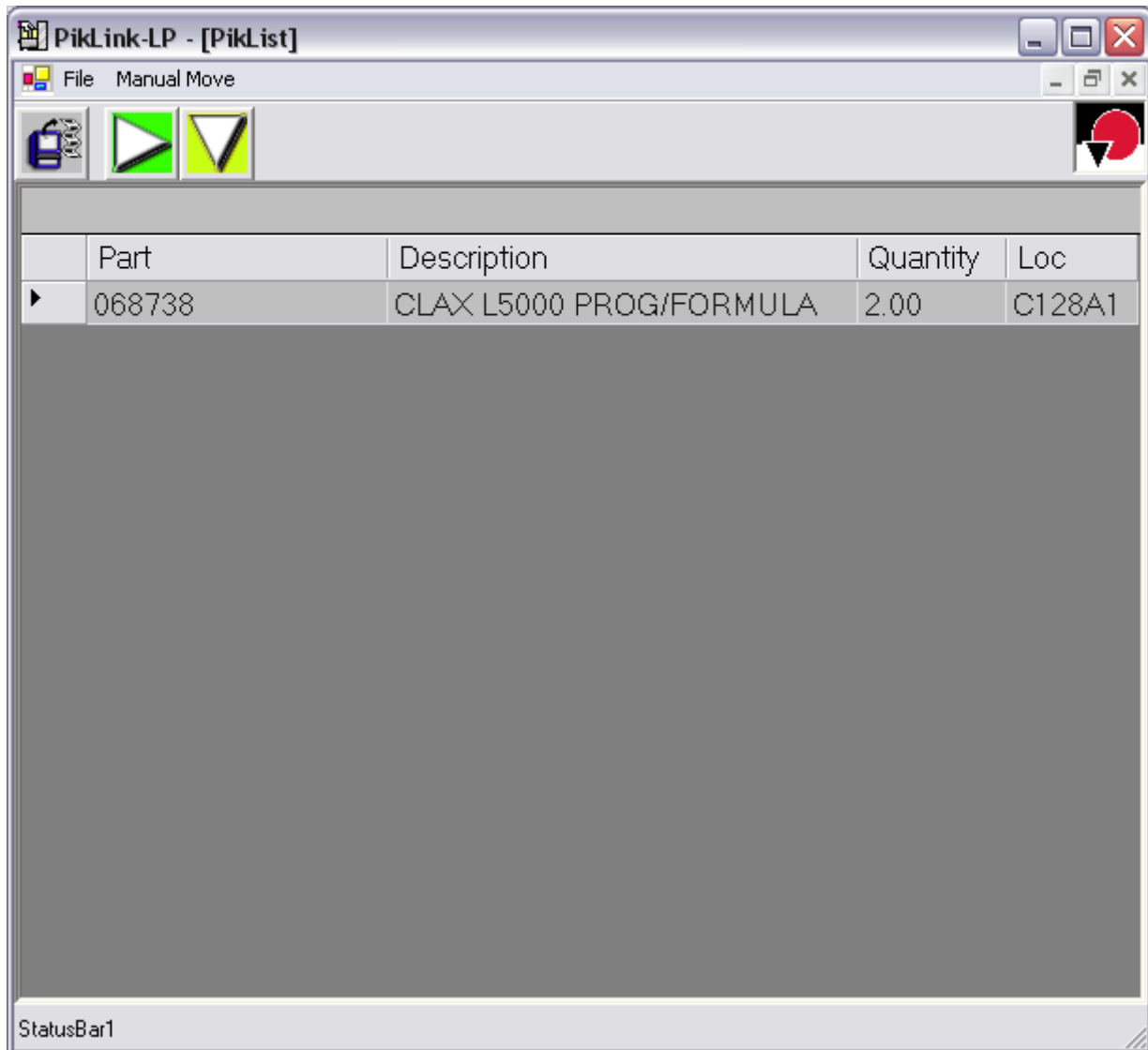
Files E.G. Delimited files, fixed width files, Proprietary file formats including printer output.

Host System Database E.G. Link to SQL Server or ODBC Link

Network Server E.G. receive part list through tcp network connection

The only fixed constant is that the host system sends a location for each part.

PikLink FP



PikLink FP is similar to PikLink LP in that it processes lists sent from the host system, however this system processes the files instantly as soon as the data arrives. The system formats it into a list and displays the list processing screen on top of the host application.

With this system the operator creates the list in their existing software and saves it or exports it. Then the PikLink FP list processing screen shows and the operator works through the list on the PikLink FP screens. When the list is processed the screen disappears. The system can create return data that can be loaded into the host system or the operator confirms the list has been completed, and carries on using the host system.

Hardware



DCS can also supply the computer hardware to go along with your new software.

DCS is unique in offering an integrated PC system that blends in with the carousel or tray retrieval System. Given that these PC's are being installed in industrial environments the integrated pc offers greater protection and longer life spans than standard office based pc systems.

The Linpic controller allows you to control all versions of the Linpic carousel with

